

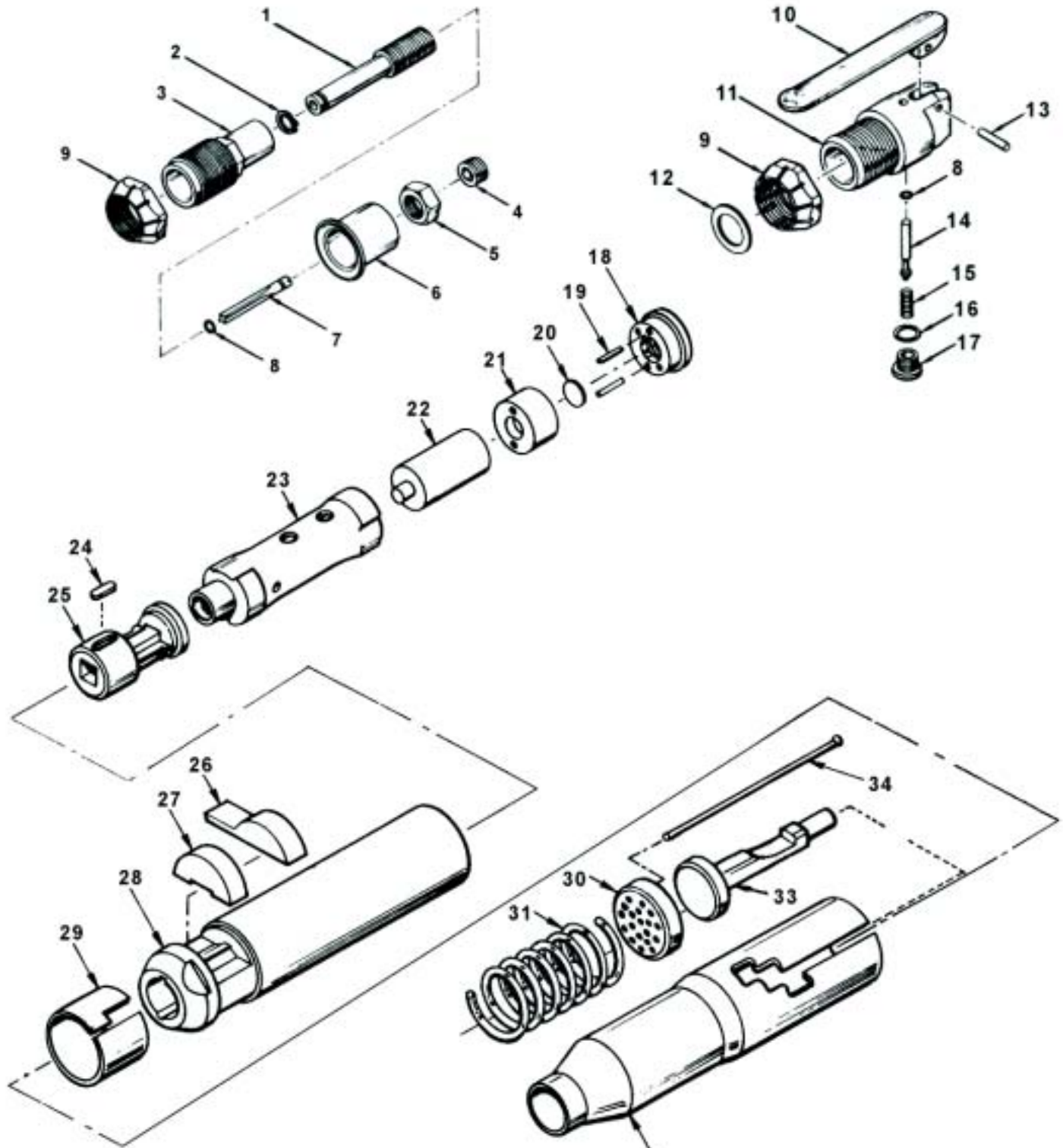


# PARTS LIST FOR SC41011 SCALERS

Form Z658  
Date 12-00/A  
Page 1 of 2

PUSH THROTTLE

LEVER THROTTLE



# SIoux TOOLS INC.

2901 FLOYD BOULEVARD ■ PO BOX 507 ■ SIOUX CITY, IOWA 51102-0507 USA ■

Printed In U.S.A.



## PARTS LIST FOR SC41011 SCALERS

| Fig. No. | Part No. | Description                                  |
|----------|----------|--|
| 1.       | 601850   | Throttle Valve Casing                        |
| 2.       | 601851   | Snap Ring                                    |
| 3.       | 601852   | Push Type Backhead                           |
| 4.       | 601853   | Socket Screw                                 |
| 5.       | 601854   | Throttle Valve Casing Lock Nut               |
| 6.       | 601855   | Control Valve Handle                         |
| 7.       | 601856   | Throttle Valve—Push Type                     |
| 8.       | 601792   | O-Ring                                       |
| 9.       | 601793   | Backhead Lock Ring                           |
| 10.      | 601794   | Throttle Lever                               |
| 11.      | 601795   | Lever Type Backhead                          |
| 12.      | 601796   | Backhead Positioning Spacer                  |
| 13.      | 601797   | Throttle Lever Pin                           |
| 14.      | 601798   | Throttle Valve                               |
| 15.      | 601799   | Throttle Valve Spring                        |
| 16.      | 601800   | Throttle Valve Cap Gasket                    |
| 17.      | 601801   | Throttle Valve Cap                           |
| 18.      | 601802   | Valve Block Button                           |
| 19.      | 601803   | Dowel Pin (2)*                               |
| 20.      | 601804   | Flutter Valve                                |
| 21.      | 601805   | Valve Block                                  |
| 22.      | 601806   | Plunger                                      |
| 23.      | 601807   | Cylinder Sleeve                              |
| 24.      | 601808   | Tool Nose Key                                |
| 25.      | 601809   | Tool Nose                                    |
| 26.      | 601810   | Retainer                                     |
| 27.      | 601811   | Retainer Buffer                              |
| 28.      | 601812   | Barrel                                       |
| 29.      | 601813   | Retainer Clip                                |
|          | 601822   | Retainer Clip (Accessory for Heavy Duty Use) |
| 30.      | 601814   | Needle Holder                                |
| 31.      | 601815   | Needle Spring                                |
| 32.      | 601816   | Round Needle Tube                            |
| 33.      | 601817   | Needle Driver                                |
| 34.      | 2260     | Needle Set of 19 (5" X .125")                |
|          | 2262     | Needle Set of 19 (7" X .125)                 |

### ASSEMBLIES WITH INCLUDED PARTS LISTED:

- 601818 Valve Block Assembly (Includes Fig 18-21)
- 601857 Push Throttle Backhead Assembly (Includes Fig 1-9)
- 601819 Round Needle Attachment (Includes Fig 30-34)
- 601820 Barrel Assembly (Includes Fig 23-25, 28)
- 601821 Lever Throttle Backhead Assembly (Includes Fig 8-17)

### NOT SHOWN:

- 601858 Inlet Bushing 1/4" NPT—Push Throttle
- 601823 Inlet Bushing 1/4" NPT—Lever Throttle
- 601859 Lever Cover
- 601860 Needle Tube Cover

\*Order Quantity As Required

FURNISH CATALOG, SERIAL, AND MODEL NUMBER  
WHEN ORDERING PARTS

**SIoux  
TOOLS INC.**

2901 FLOYD BOULEVARD ■ PO BOX 507 ■ SIOUX CITY, IOWA 51102-0507 USA ■

Printed In U.S.A.